



Jefferson High School EXECUTIVE SUMMARY

PROVIDED BY FINDORFF

700 W. Milwaukee Street • Jefferson, WI 08.23.2024

The School Year is Almost Here!

The 2024 Summer Phase of work is complete at Jefferson High School as the year nears commencement. While work continues in other areas of the school, furniture and equipment has started to occupy the Classrooms and Ag Shop spaces. The Auto, Metal, and Wood Shops are receiving their final paint and sealed concrete floor finishes as equipment is being prepared for move-in. Casework and accessories continue in the Head House atop the new epoxy resinous floors, while MEPF (Mechanical, Electrical, Plumbing, & Fire Protection) crews finish installing new fixtures and devices. MEPF overhead work is nearly complete at the Skills Lab Addition. Upcoming work will include interior painting (incorporating the various colors defining the MEPF systems), exterior painting, and MEPF finishes and fixtures. Wishing you all a great start to the school year, stay tuned for the remaining work at Jefferson High School!

Progress Update

- MEPF overhead rough-ins at the Skills Lab Addition
- Casework and accessories at the Test Kitchen/Head House
- Sealed concrete flooring at all Shop areas
- Final wall and ceiling painting at all Shop areas

Upcoming Work

- Owner equipment move-in at Auto, Metal, & Wood Shop spaces
- Overhead painting at the Skills Lab Addition
- Casework and accessories installation at the Skills Lab Addition



Casework, flooring, and ceiling tile is all installed in the Food Lab.



A look at the new entrances to each of the Shop Classroom spaces with names stenciled proudly on the face.

DID YOU KNOW?

The finishing touches are being applied to the new dust collector unit outside of the Wood Shop & Skills Lab at Jefferson High School. The 2-ton unit stands almost 20' tall, bridging out with dedicated ductwork drops to both spaces. This package includes two 15-horsepower high-efficiency fans and six 42-gallon collection barrels. This dust collector will serve the new shop equipment with direct dust collection to keep productivity up and keep the shop clean!



Questions?

Project Manager, Jonathan Winch / (608) 219-5091 / jwinch@findorff.com

Project Engineer, Brennan Sullivan / (920) 319-2077 / bsullivan@findorff.com

Findorff
BUILDING & BEYOND



East Elementary EXECUTIVE SUMMARY

PROVIDED BY FINDORFF

120 S. Sanborn Ave • Jefferson, WI PAGE 2

Finishing up on Phases 1 & 2

Our first punch list for East Elementary is complete! Over the past couple weeks, crews have been working on finishing touches including flooring installation in the classrooms and wall tile in the restrooms. Plumbing fixtures and accessories like soap dispensers and paper towel holders have been hung. At the new main entrance, access control technology has been installed to create a secure entry controlled at the front desk.

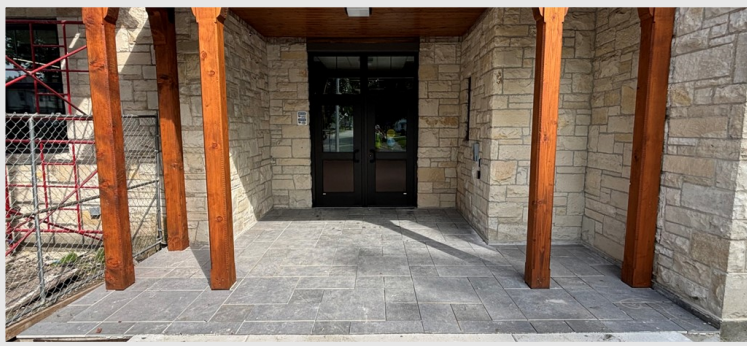
As work wraps up in Phases 1 and 2, crews will move into Phase 3 where work will continue for the next few months.

Progress Update

- Wood floors have been refurbished in 2nd floor classrooms
- Casework and flooring installed in the office
- Construction clean in the office and 1st and 2nd floor classrooms

Upcoming Work

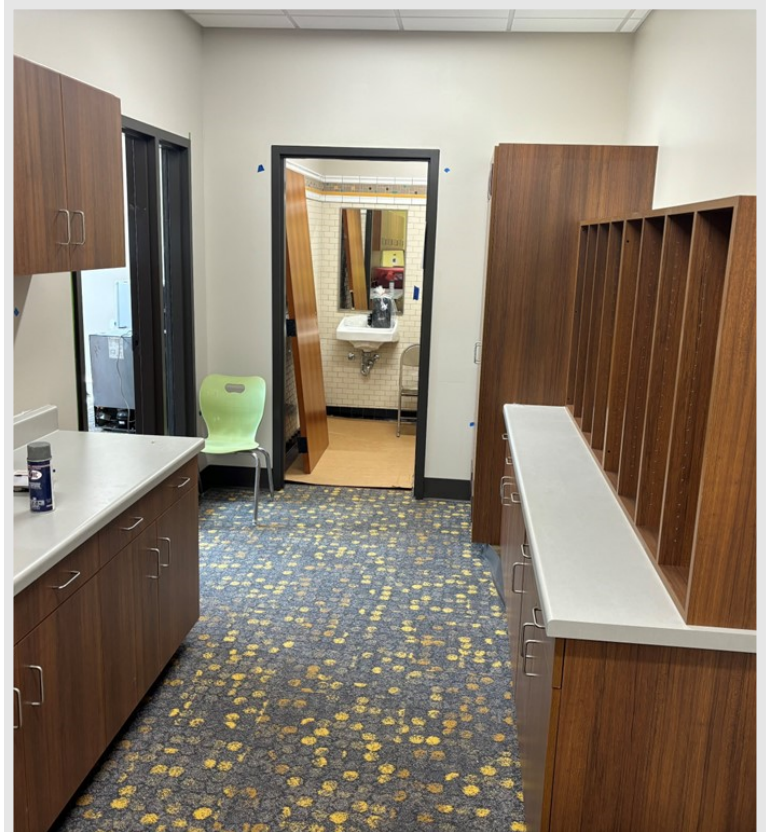
- Ceiling in gym to be installed
- Continued installation of fixtures and partitions in restrooms
- Construction clean in restrooms



New vestibule doors have been installed; columns are awaiting paint.



Wall tile is complete in the restrooms and plumbing fixtures are being installed.



The main office is receiving its final touches!

Questions?

Project Manager, Jonathan Winch / (608) 219-5091 / jwinch@findorff.com

Project Engineer, Maura Cannon / (714) 747-4844 / mcannon@findorff.com

Findorff
BUILDING & BEYOND



West Elementary EXECUTIVE SUMMARY

PROVIDED BY FINDORFF

900 W. Milwaukee Street • Jefferson, WI PAGE 3

Finishing Touches at West

As furniture is moved into West Elementary, crews continue to work on final touches. Casework has been installed in the lounge and library and final paint is in progress. As doors are being hung throughout the school, restrooms are acquiring their finishing touches like plumbing fixtures and toilet partitions.

Progress Update

- Completed tile work in restrooms
- Plumbing fixtures and toilet partitions installed in restrooms
- Painting on exterior and interior library walls

Upcoming Work

- Ceiling tile continued installation in library and corridors
- Teacher equipment move in
- Punchlist on restrooms, corridors and library



Plumbing fixtures and toilet partitions have been installed in restrooms.



Library flooring has been installed and the school district has moved in furniture for the start of the school year!



New casework and flooring installed in the lounge.

Questions?

Project Manager, Jonathan Winch / (608) 219-5091 / jwinch@findorff.com

Project Engineer, Maura Cannon / (714) 747-4844 / mcannon@findorff.com

Findorff
BUILDING & BEYOND



Sullivan Elementary EXECUTIVE SUMMARY

PROVIDED BY FINDORFF

618 Bakertown Rd. • Jefferson, WI PAGE 4



The new vestibule at the main entrance with its key fob system to enter the building.

All Wrapped Up at Sullivan

As staff starts moving in, work is finishing up at Sullivan. We have done our punch list for all rooms besides restrooms which will take place next week. Casework and flooring has been installed and painters are touching up throughout the school.

Restrooms are being finalized with the last of the plumbing fixtures and toilet partitions being installed. As construction clean wraps up, Sullivan Elementary gears up to receive students in just a few weeks...

Progress Update

- Plumbing fixtures and toilet partitions installed in restrooms
- Flooring installed in office spaces
- Equipment move-in

Upcoming Work

- Punch list for restrooms
- Miscellaneous hardware installation



The new restroom is ready for everyday use!



Casework and flooring installed in the office passage.

Questions?

Project Manager, Jonathan Winch / (608) 219-5091 / jwinch@findorff.com

Findorff
BUILDING & BEYOND